

## INSTALLATION

### 1. INSTALL HEATED OXYGEN SENSOR (for Bank 1 Sensor 2)

- (a) Using SST, install the sensor to the front exhaust pipe.

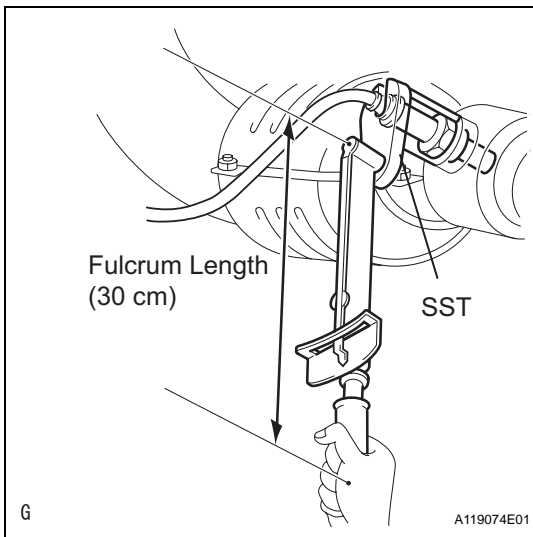
**SST 09224-00010**

**Torque: 40 N\*m (408 kgf\*cm, 30 ft.\*lbf) for use with SST**

**44 N\*m (449 kgf\*cm, 32 ft.\*lbf) for use without SST**

**HINT:**

Use a torque wrench with a fulcrum length of 30 cm (11.81 in.).



### 2. REMOVE HEATED OXYGEN SENSOR (for Bank 1 Sensor 1)

- (a) Using SST, install the sensor to the front exhaust pipe.

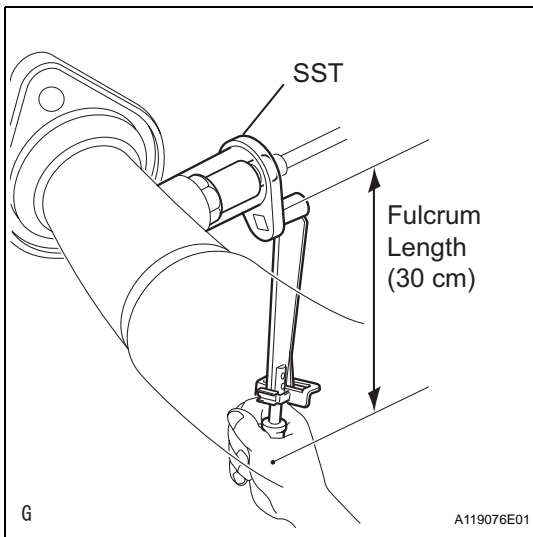
**SST 09224-00010**

**Torque: 40 N\*m (408 kgf\*cm, 30 ft.\*lbf) for use with SST**

**44 N\*m (449 kgf\*cm, 32 ft.\*lbf) for use without SST**

**HINT:**

Use a torque wrench with a fulcrum length of 30 cm (11.81 in.).



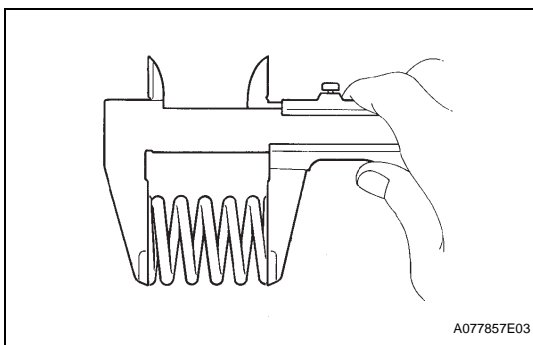
### 3. INSTALL FRONT EXHAUST PIPE

- (a) Using a vernier caliper, measure the free length of the compression spring.

**Minimum length:**

**40.5 mm (1.594 in.)**

If the length is less than the minimum, replace the compression spring.

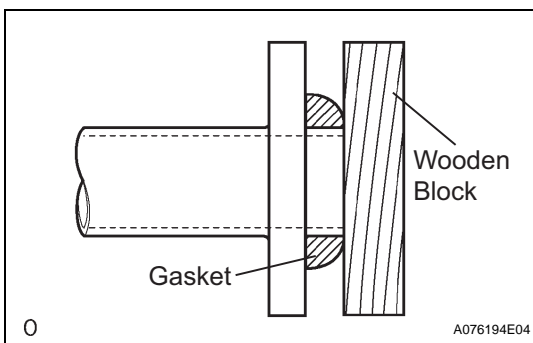


- (b) Using a plastic-faced hammer and wooden block, tap in a new gasket until its surface is flush with the exhaust manifold.

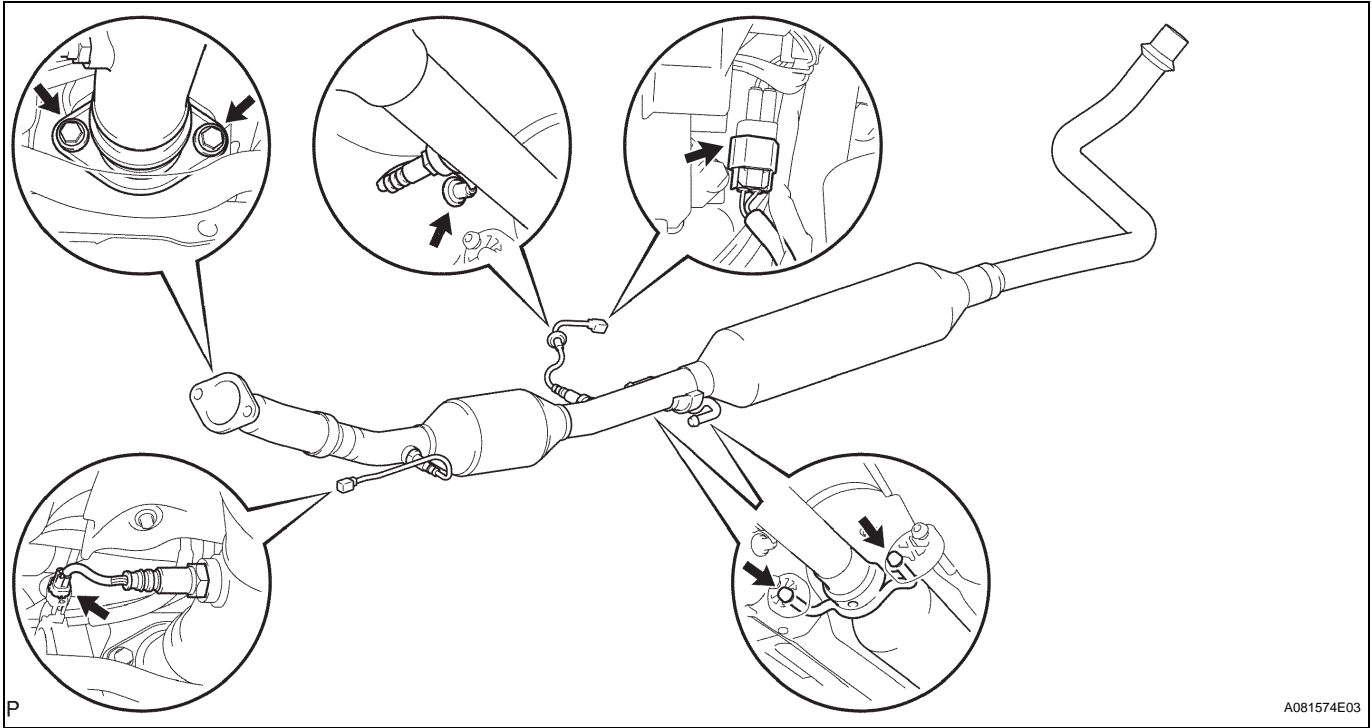
**NOTICE:**

- Tap in the gasket in the correct direction.
- Do not reuse the removed gasket.
- Do not to push in the gasket while installing the exhaust pipe.

- (c) Connect the 2 exhaust pipe supports, and install the exhaust pipe.

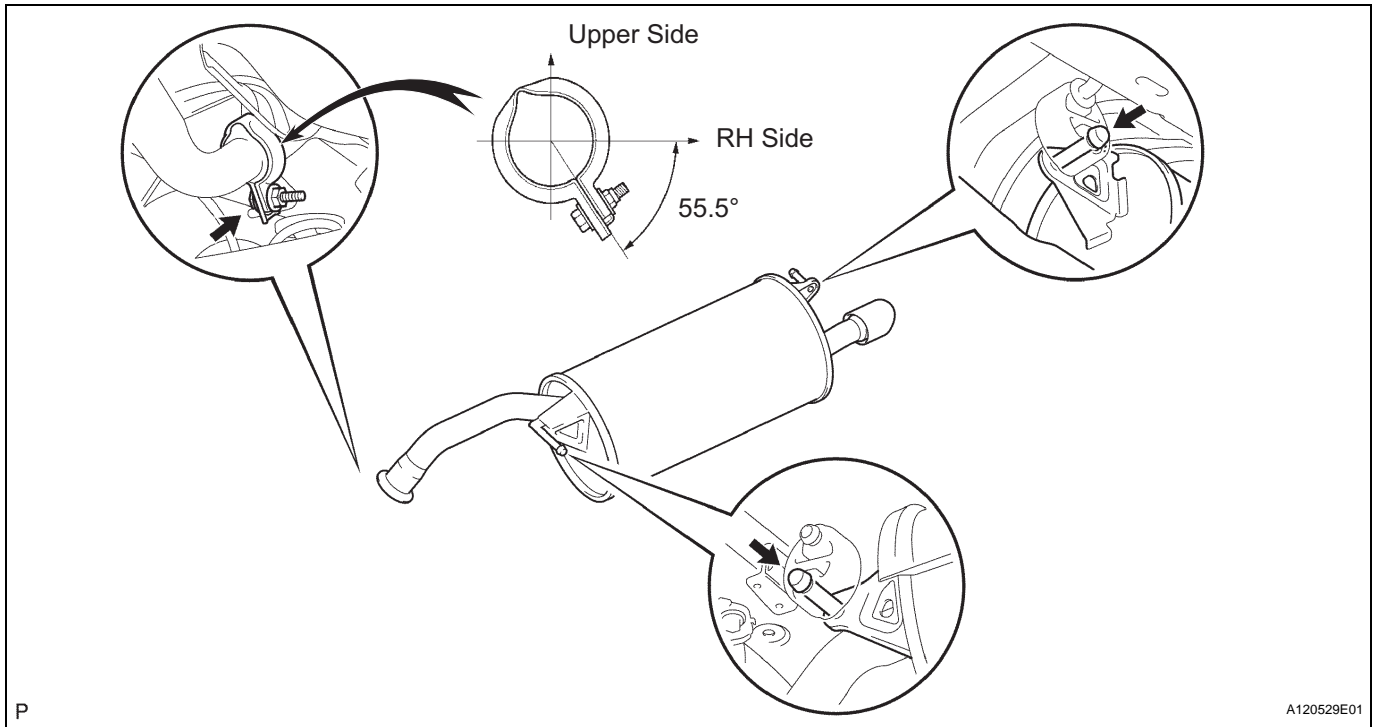


- (d) Install the 2 compression springs and 2 bolts.  
**Torque: 43 N\*m (438 kgf\*cm, 32 ft.\*lbf)**
- (e) Connect the 2 heated oxygen sensor connectors.
- (f) Install the grommet.



#### 4. INSTALL TAILPIPE

- (a) Install a new gasket onto the front exhaust pipe.
- (b) Connect the 2 exhaust pipe supports, and install the tailpipe.
- (c) Install the clamp with the bolt as shown in the illustration.  
**Torque: 32 N\*m (326 kgf\*cm, 24 ft.\*lbf)**



EX

5. CHECK FOR EXHAUST GAS LEAKS
6. INSTALL FRONT PANEL BRACE
  - (a) Install the floor panel brace with the 2 bolts.  
Torque: 20 N\*m (204 kgf\*cm, 14 ft.\*lbf)
7. INSTALL REAR CONSOLE BOX (See page [IP-30](#))
8. INSTALL SHIFT LEVER KNOB (for Manual Transaxle)
9. CONNECT CABLE TO NEGATIVE BATTERY TERMINAL

