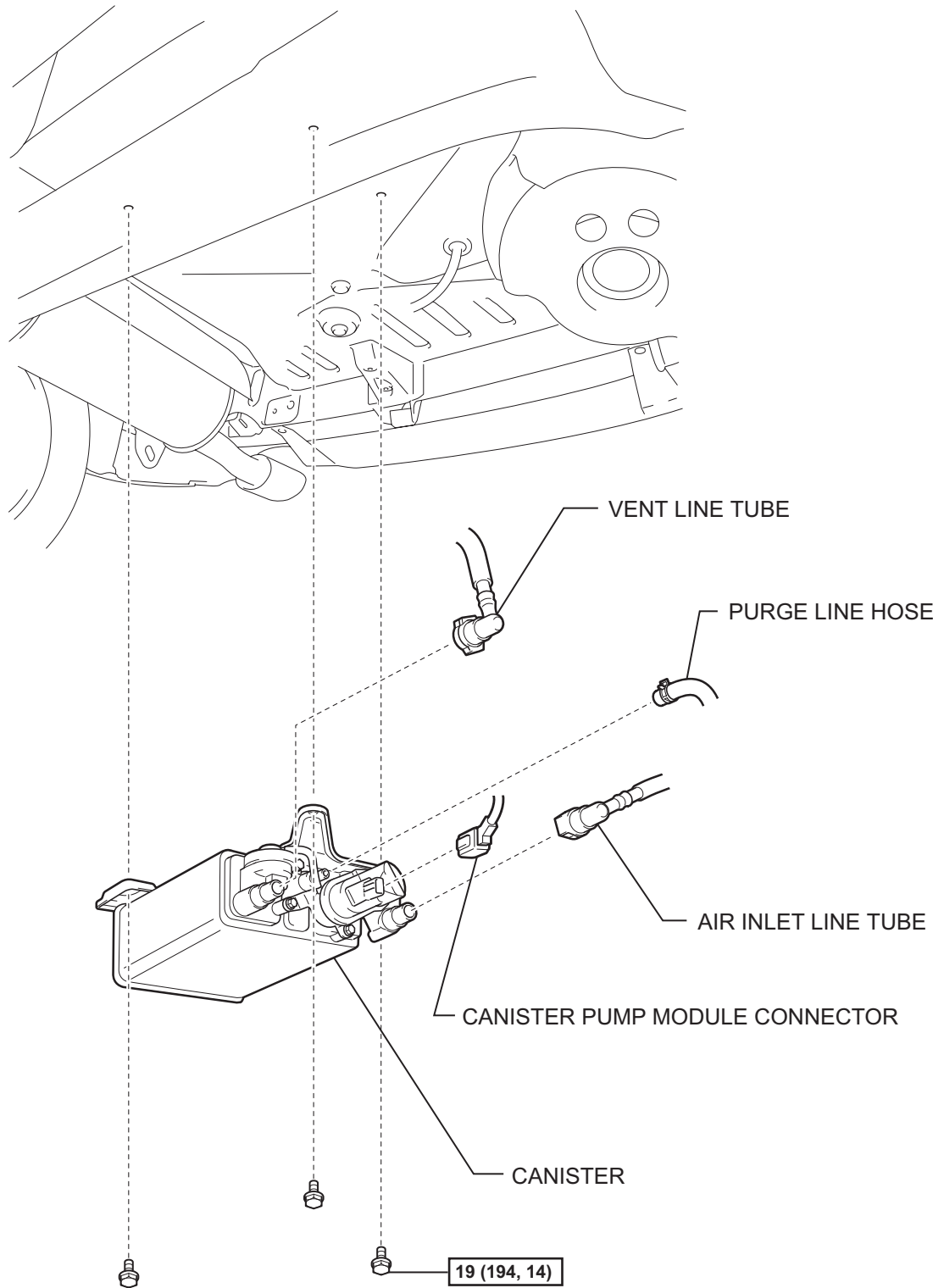


CANISTER COMPONENTS

EC



N*m (kgf*cm, ft.*lbf) : Specified torque

REMOVAL

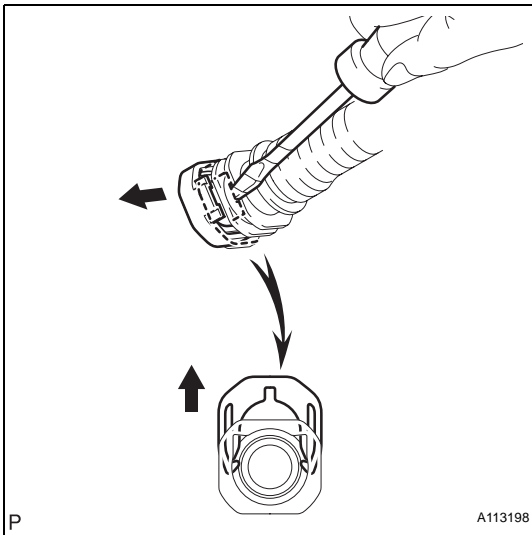
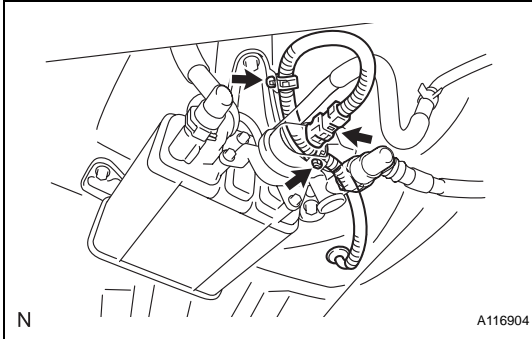
1. DISCONNECT CABLE FROM NEGATIVE BATTERY TERMINAL

CAUTION:

Wait at least 90 seconds after disconnecting the cable from the negative (-) battery terminal to prevent airbag and seat belt pretensioner activation.

2. REMOVE CANISTER

(a) Disconnect the connector and detach the 2 clamps.



(b) Disconnect the 2 tubes and hose.

- (1) Using a screwdriver, pry up the retainer.

HINT:

Do not remove the retainer.

- (2) Disconnect the purge line hose.
- (3) Disconnect the air inlet line tube from the canister.
- (4) Disconnect the vent line tube from the canister (leak detection pump).

